

**LES ROIS VAGABONDS**  
**« Concerto pour deux clowns »**  
De et avec  
**Julia Moa CAPREZ et Igor SELLEM**

**TECHNICAL CONTACT (French and English):**

**Sacha Pinget: +33(0) 648 057 521 - regie.vagabonds@gmail.com**

Technicians on Tour : Sacha Pinget et Florian Euvrard

**CONTACT (French / English / German / Italian / Spanish / Portuguese):**

**Julia Moa Caprez: +33(0) 682 317 027 - lesroisvagabonds@gmail.com**

**This rider and his 8 appendices are integral part of the contract  
It should be signed by the organizer**

**MINIMUM STAGE SIZE:**

Depth: 7m

Width: 6m

Clearance: 5m

**STAGE:**

*(plans in appendix 1)*

The company brings:

- Tumbling floor and dance carpets
- 1 metallic support with velvet curtains (width: 2m, depth: 3m, height: 2,50 m)
- 1 chandelier (diameter: 2m; height: 1,70m; weight: 25 kg).
- All the rigging material
- 1 winch with a bag for weights
- 1 low fog machine (MDG Ice Fog Compact)
- 1 manual machine for spreading rose-leaves

The company demands:

- 200kg rigging point for the chandelier, in the center of the forestage, exact spot to be determined together. (The chandelier is an aerial circus equipment non-dynamic.)  
*(exemples in appendices 7 and 8)*
- 200kg rigging point in the back-stage, to be determined together.  
*(exemples in appendices 7 and 8)*
- 200kg weights (sandbags or stage weights) for holding down the winch.
- Curtains: 4 pairs of black legs + 4 black borders + 1 stage teaser

- Black backdrop with opening in the center
- Liquid carbon dioxide (CO2): One 10kg bottle with syphon / per show, for Low-Fog-Machine (MDG ICE-FOG Compact)  
If the organizer doesn't provide the CO2, the company can reclaim **250€** to the organizer.
- At least 36m dance carpet tape
- White and black electrician tape

**LIGHT:**

*(plans in appendices 2 to 5)*

The company brings:

- Light desk on PC (D:light) and remote control
- Node for Ethernet/DMX
- Gel sets that are not provided by the theater

The company demands:

- Light and Sound desks side by side in venue
- A scaled stage plan at least 1 month before the show
- Written patch when the company arrives
- **Pre-assembly with gel sets (as many as possible)**  
**In case of impossibility of the pre-assembly, please contact the company at least one month before the show.**
- DMX line with 5 spikes at the technic desk
- 48 circuits 3 kw on DMX
- 9 Spotlight PC 1000W
- 38 PAR 64 CP62
- 3 PAR 64 CP61
- 6 Profile Spot type 613 Sx
- 2 Profile Spot type 614 Sx
- 4 Profile Spot type 714 Sx
- 2 Spotlight PC 2 kW
- 4 lighting stands height 1,60m
- 4 lighting stands height 2,50m
- 11 floor-stands
- Direct 16A line and DMX line with 5 spikes on back stage (for MDG Low-Fog-Machine)
- 2x 613 profiles and 4 PAR 64 CP62 can be requested according to the size of the proscenium.

A light plan adaptation may be possible with company agreement at least three weeks before the show.

**Gels :**

Reference	Quantity	Format
R132	4	2kW Profile
	4	1kW Profile
	5	1kW PC
R119	4	1kW Profile
R035	2	PAR 64
R053	8	PAR 64
L147	2	1kW PC
L176	4	PAR 64
L203	6	1kW Profile
	2	PAR 64
	4	1 kW PC
	4	2 kW Profile
L202	2	1kW Profile
L248	20	PAR 64
L249	1	PAR 64
L281	4	PAR 64
	2	1kW PC
L200	1	2kW PC
L204	1	2kW PC

**SOUND:**The company brings:

- 7 wireless microphones: Type Sennheiser (XLR outputs)
- Yamaha LS9 Digital mixer (XLR I/O)

The company demands:

- Professional quality stereo sound system PA (for example: Nexo, L accoustics, Meyer, DnB,...). The PA must cover equally every area of the audience and work when at the company begin her set-up. Please communicate your sound-system material list to the company at least 1 month before the show in order to be validated by the company's technician. If the company's technician considers it not suitable, he can ask you to rent another sound system.
- Sound and Light desks side by side in venue
- 2 monitors on stage (type PS 15, L.A 12XT)
- 1 Multicore cable 12/4 from technic desk to the stage
- 1 Intercommunication system: 3 posts

**TIME NECESSARY FOR ASSEMBLY:**

With pre-assembly: 2 services (2 x 4h)

Without pre-assembly: 3 services (3 x 4h)

**TIME NECESSARY FOR DISMANTLE:**

2h with 2 persons (concerns only the companies material)

The company's material must be dismantled and loaded before the local material.

**THEATRE STAFF DEMANDED:**

In case if there is no pre-assembly please provide a supplementary assembly service the day before the show, with the necessary staff according to the size of the stage, possibilities of light rigging, etc.

Assembly day:

- 1 light tech for 2 assembly services
- 1 sound tech for 2 assembly services
- 1 stage tech for 2 assembly services
- **2 stagehands / technicians who stay all the assembly time with the company's technicians**

For the show:

- 1 light tech for 1 Show service
- 1 sound tech for 1 Show service
- 1 stage tech for 1 Show service

For the dismantle:

- **2 stagehands / technicians who stay all the dismantle time with the company's technicians**

**TIMETABLE EXAMPLE**

- 9h-10h: Truck unloading + Installation of patch
- 10h-13h: Light focusing and Installation of the chandelier
- 13h-14h: Lunch
- 14h-16h: Sound Installation, Stage Installation and Installation of the Low-Fog-Machine
- 16h-17h: Final light focusing with the artists
- 17h-18h: Sound check with the artists
- 18h-19h45: Artists warm-up and preparation
- 19h45: Stage cleaning
- 20h30: Show
- 21h45: Dismantle and Truck loading
- 23h45: Dinner for the whole crew

**Duration of the show: 1h10**

**DRESSING ROOMS:**

- 1 or 2 dressing rooms with toilets and showers. Hot water must work in the showers when the company arrives.
- Catering: water, fruits, cookies, cheese, bread, coffee, tea, coca cola, beer, ...
- 10 x 0,5l non gaseous water for (every) show
- Three clean towels
- All the company's staff must be able to access the dressing rooms at least 30min after the end of the load in.

**PARKING:**

Provide a secured parking:

- For a truck (Type Mercedes sprinter: height: 2,60m; length: 7m; matriculation: CD-360-RN)
- For a Camping-Car (height: 3m; length: 7m; matriculation: DH-390-KQ) as close as possible to the theatre **with electrical 16A connection.**

**REMARKS:**

- Crew on tour: 5 persons (2 artistes and their child, 2 technicians)
- Please let us know if there are any groups or disabled persons so that we can choose the most adapted places for them.
- If the stage height is flexible please adjust it at 80 cm.
- If the stage is not flat please contact us.

**THE COMPANY/  
AGENT OF ARTISTS**

Date :

in (city) :

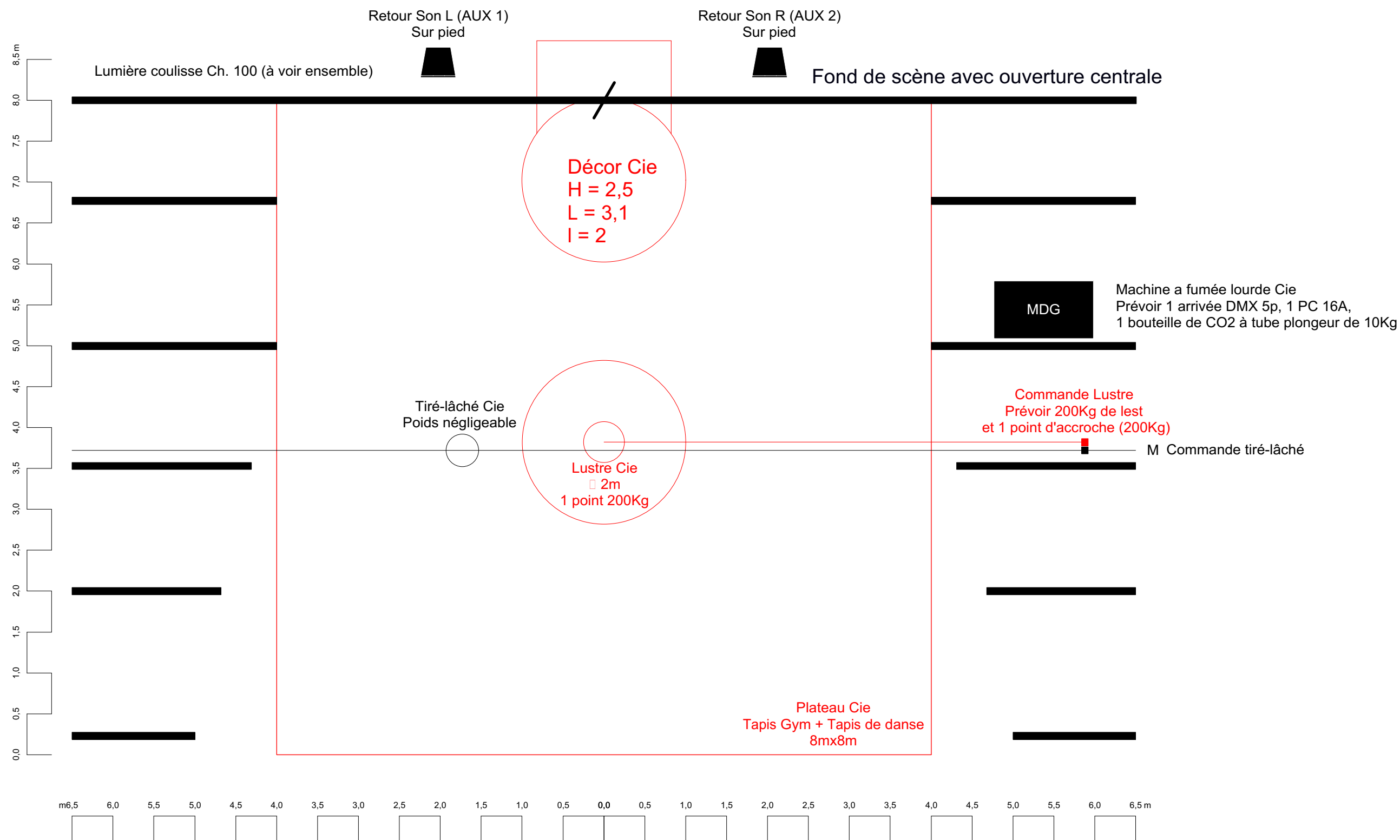
Signature :

**THE ORGANIZER**

Date :

in (city):

Signature :



Cie Les Rois Vagabonds

Concerto pour deux clowns

# Annexe 1 : Implantation Plateau

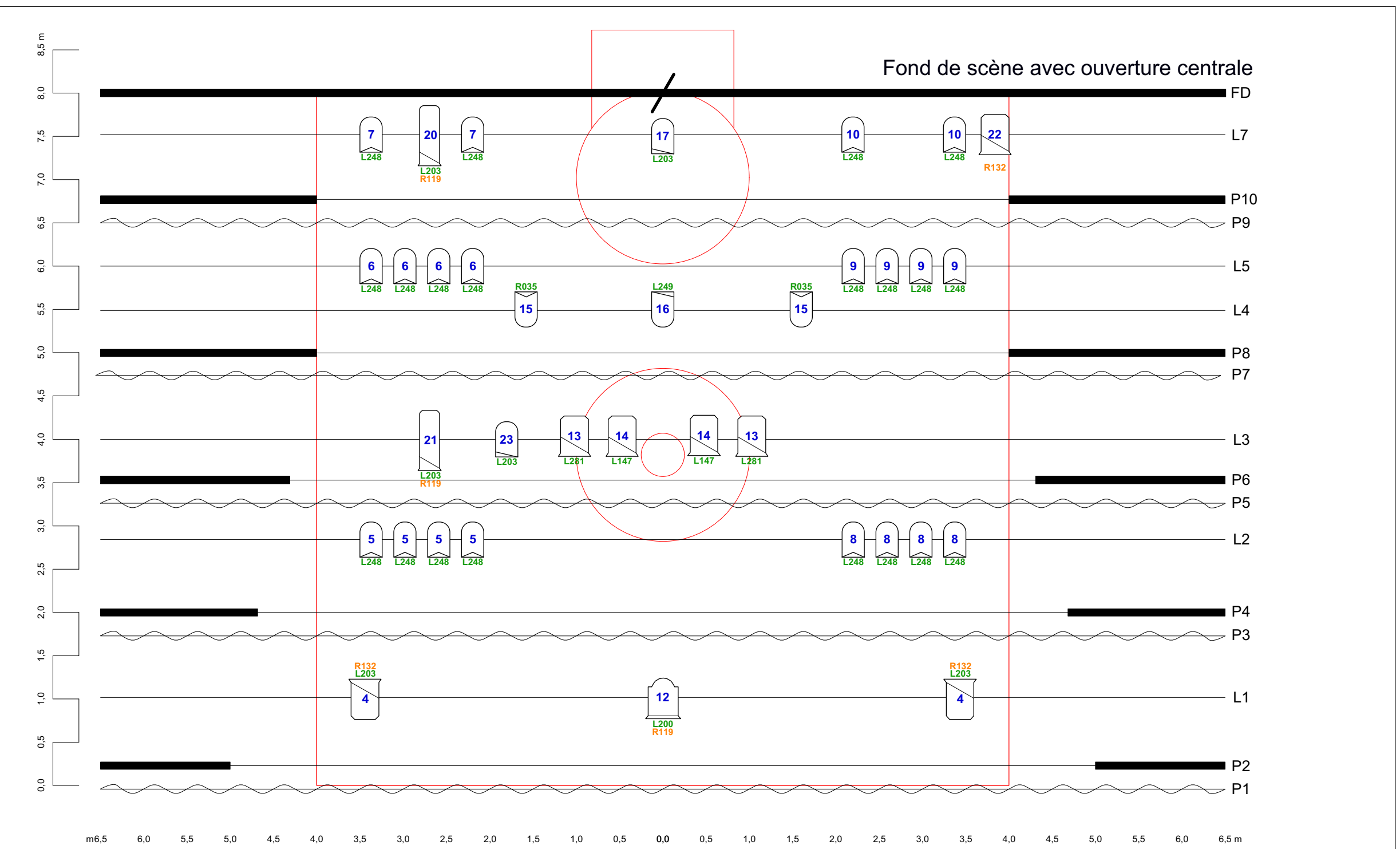
Ce plan fait partie intégrante de la fiche technique (màj : 30/10/2019)

ECH 1:50

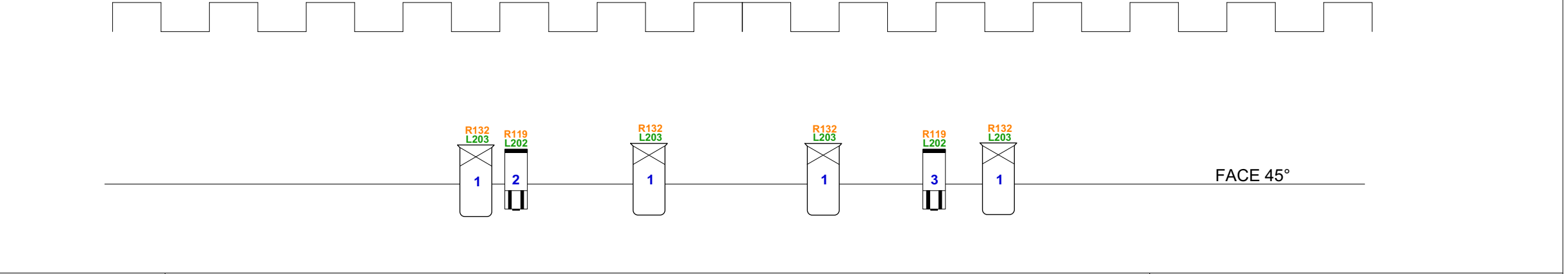
A3

regie.vagabonds@gmail.com

Circuit	Grada	Circuit	Grada
1		20	
2		21	
3		22	
4		23	
5		24	
6		48 Public	
7		100 Coulisse	
8		Notes	
9			
10			
11			
12			
13			
14			
15			
16			
17			
18			
19			



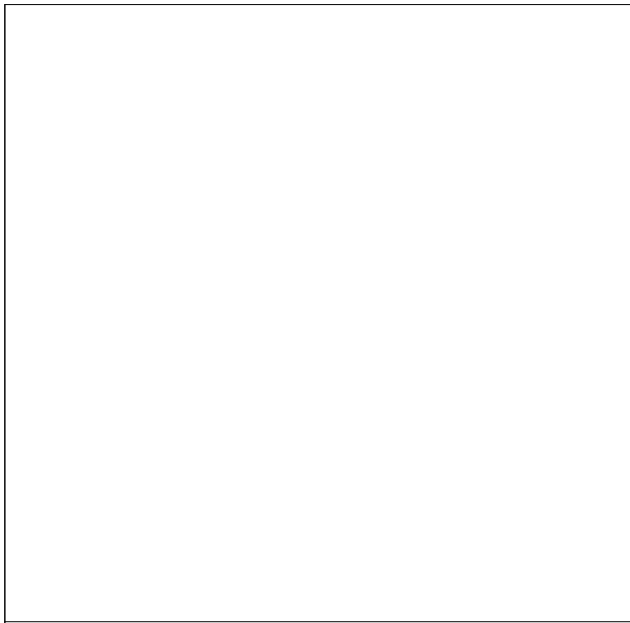
LEGENDE		
	PC 2K (x2)	
	PC 1K (x9)	
RJ 714 (x4)	RJ 614 (x2)	RJ 613 (x6)



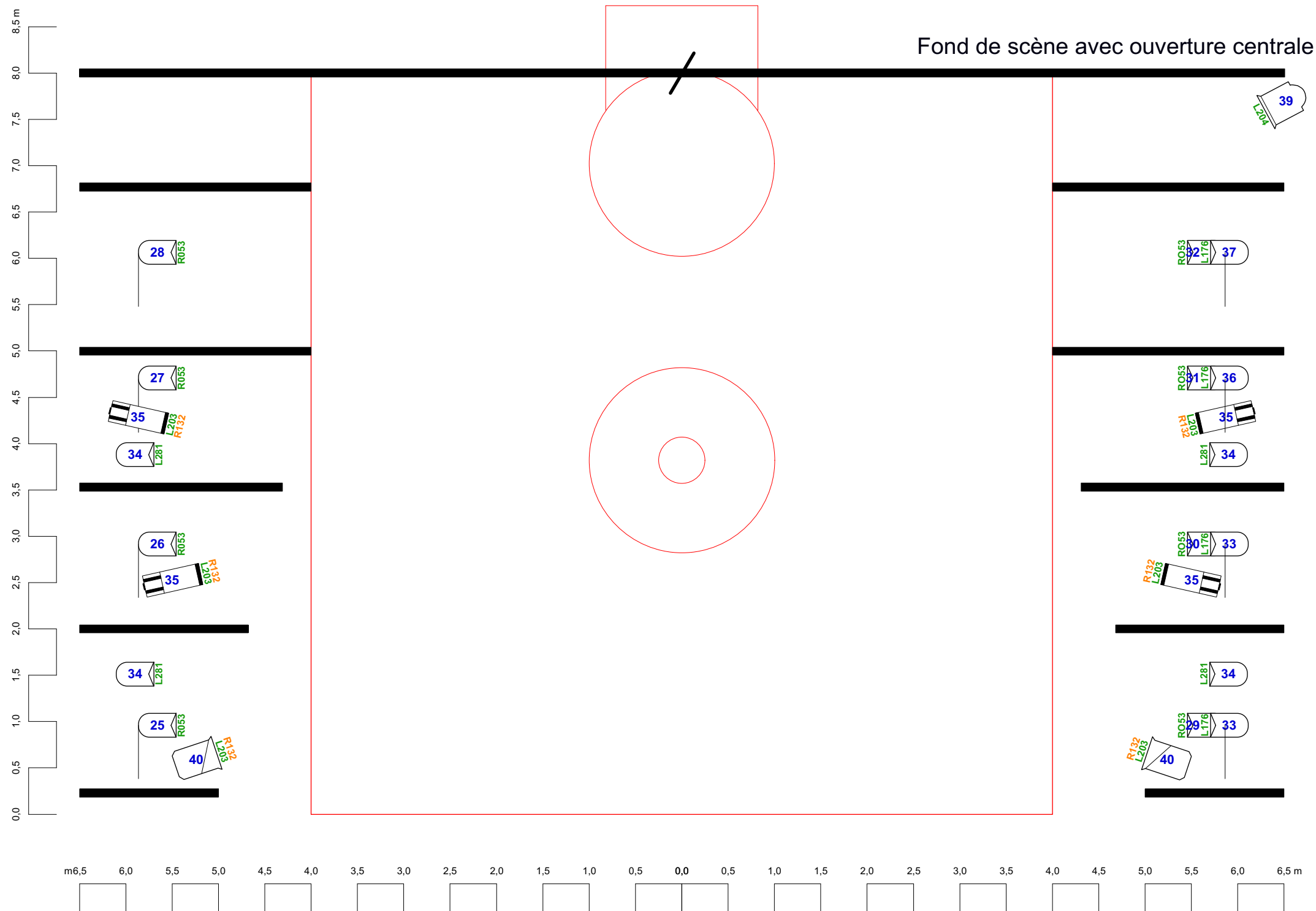
Cie Les Rois Vagabonds  
 Concerto pour deux clowns

**Annexe 2 : Lumière Gril**  
 Ce plan fait partie intégrante de la fiche technique (màj : 30/10/2019)

ECH 1:50      A3  
 Vue Dessus  
 regie.vagabonds@gmail.com



Notes



LEGENDE

Frost  
Couleur  
Circuit



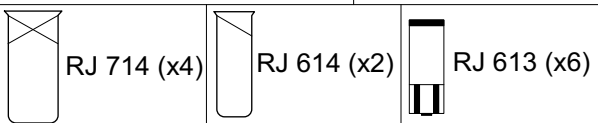
PC 2K (x2)

PAR 64 CP61 (x3)



PC 1K (x9)

PAR 64 CP62 (x38)



RJ 714 (x4)

RJ 614 (x2)

RJ 613 (x6)

Cie Les Rois Vagabonds

Concerto pour deux clowns

# Annexe 3 : Lumière Sol

Ce plan fait partie intégrante de la fiche technique (màj : 30/10/2019)




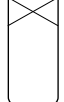

ECH 1:50 A3  
Vue Dessus

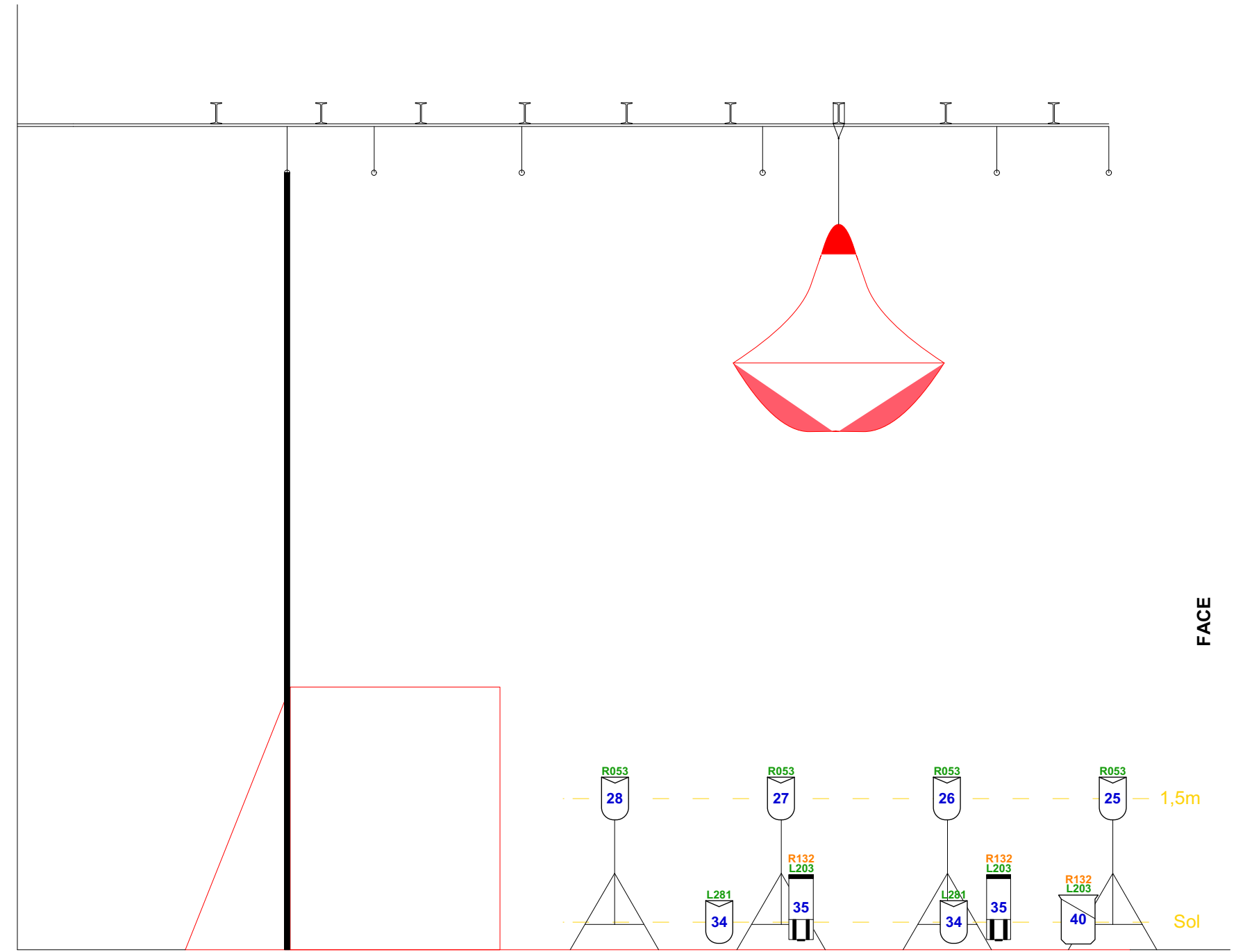
regie.vagabonds@gmail.com



Circuit	Grada
25	
26	
27	
28	
34	
35	
40	

Notes

LEGENDE	
	PC 2K (x2)
	PC 1K (x9)
	
	RJ 614 (x2)
	RJ 613 (x6)



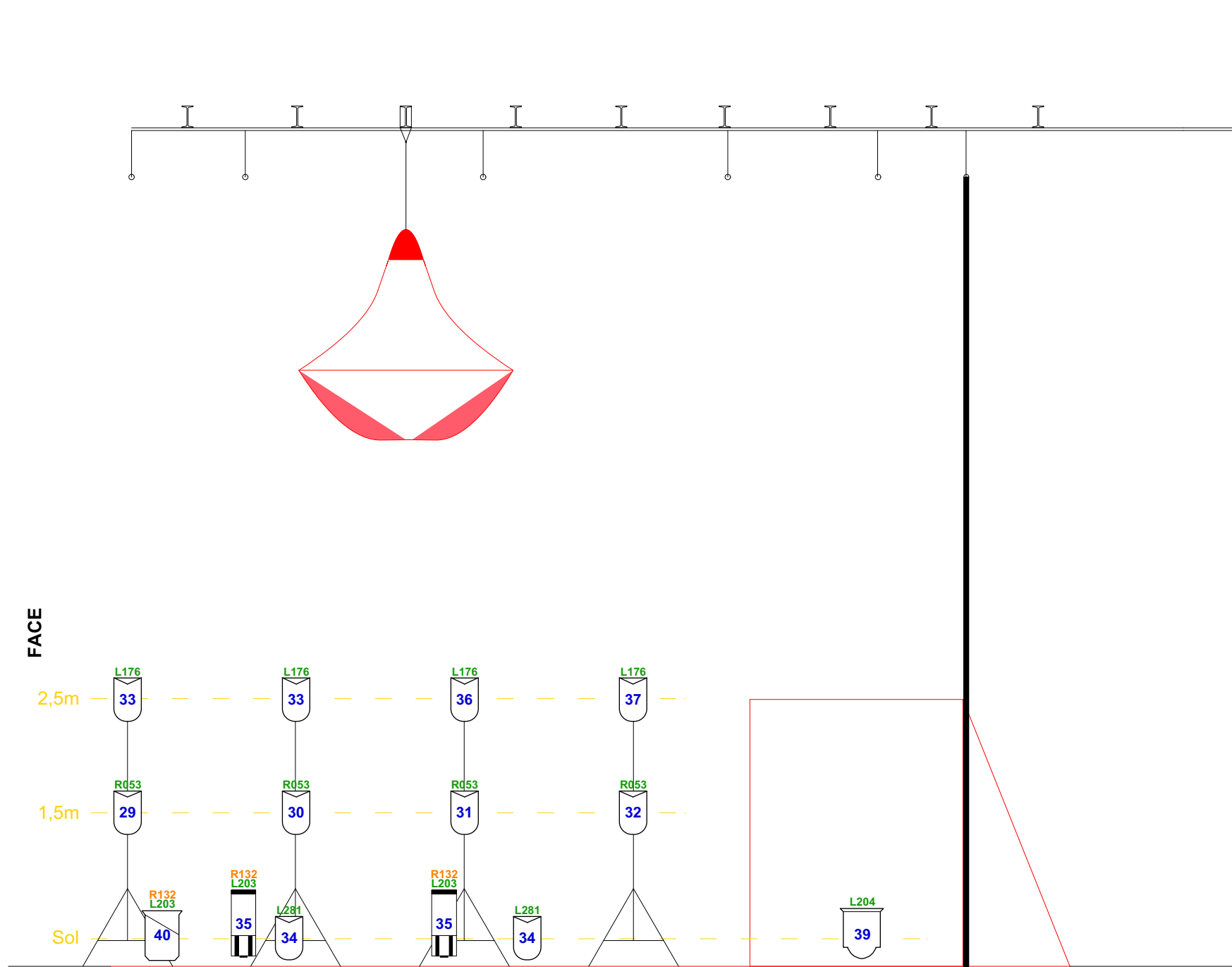
Cie Les Rois Vagabonds  
 Concerto pour deux clowns

**Annexe 4 : Lumière Sol Jardin**  
 Ce plan fait partie intégrante de la fiche technique (màj : 30/10/2019)

ECH 1:50      A3  
 Coupe  
 regie.vagabonds@gmail.com

Circuit	Grada	Circuit	Grada
29		36	
30		37	
31		39	
32		40	
33			
34			
35			

Notes



LEGENDE

Frost  
Couleur  
Circuit

PC 2K (x2)

PAR 64 CP61 (x3)

PC 1K (x9)

PAR 64 CP62 (x38)

RJ 714 (x4) RJ 614 (x2) RJ 613 (x6)

Cie Les Rois Vagabonds

Concerto pour deux clowns

# Annexe 5 : Lumière Sol Cour

Ce plan fait partie intégrante de la fiche technique (màj : 30/10/2019)

ECH 1:50

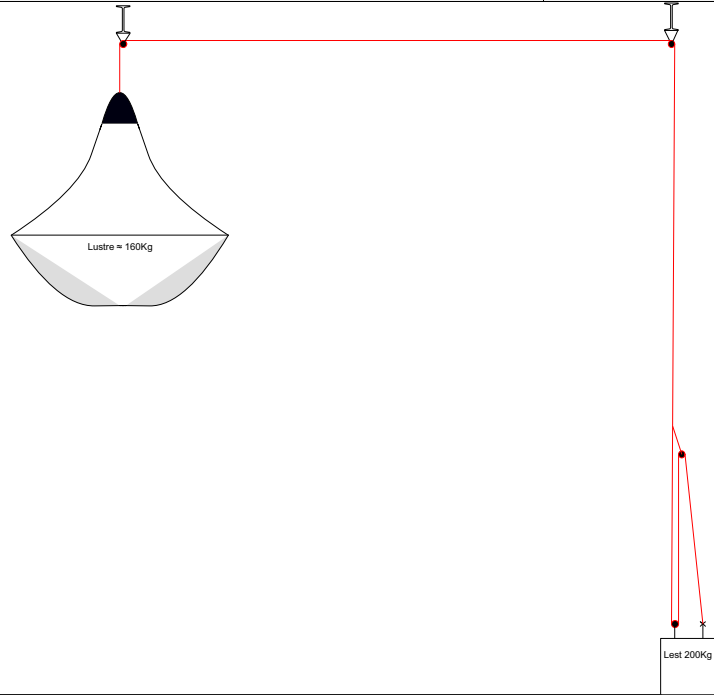
A3

Coupe

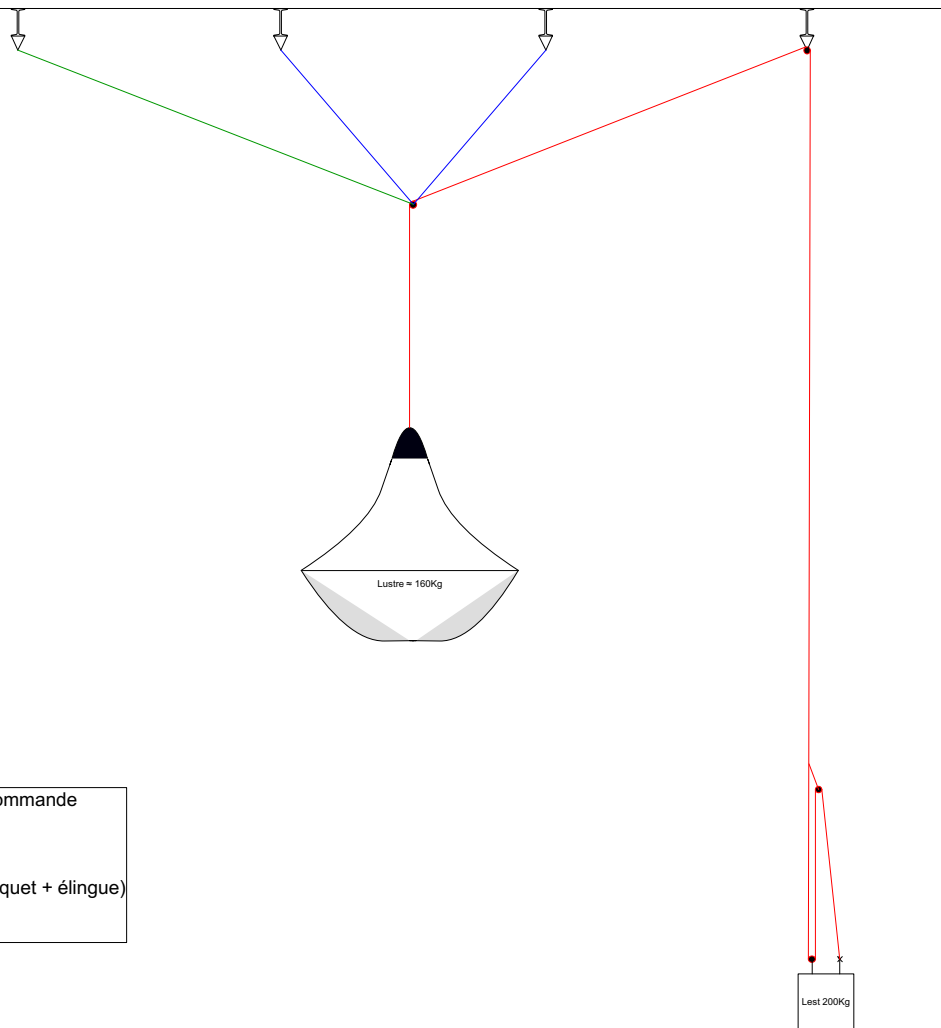
regie.vagabonds@gmail.com

Cie Les Rois Vagabonds	Annexe 6 : Feuille de Patch	Mise à jour du 30/10/2019
Concerto pour deux clowns		regie.vagabonds@gmail.com

Gril (hauteur 7 m, 5m minimum)				
Dimmer	Circuit	Source	Gel	Perche
	1	4 x 714	L203 + R132	FACE
	2	613	L202 + R119	FACE
	3	613	L202 + R119	FACE
	4	2 x PC 1kW	L203 + R132	L1
	5	4 x PAR CP62	L248	L2
	6	4 x PAR CP62	L248	L5
	7	4 x PAR CP62	L248	L6
	8	4 x PAR CP62	L248	L2
	9	4 x PAR CP62	L248	L5
	10	4 x PAR CP62	L248	L6
	11			
	12	PC 2kW	L200 + R119	L1
	13	PC 1kW	L281	L3
	14	2 x PC 1kW	L147	L3
	15	2 x PAR CP62	R035	L4
	16	PAR CP61	L249	L4
	17	PAR CP61	L203	L6
	18			
	19			
	20	614	L203 + R119	L6
	21	614	L203 + R120	L3
	22	PC 1kW	R132	L6
	23	PAR CP61	L203	L3
	24			
Sol				
Dimmer	Circuit	Source	Gel	
	25	PAR CP62	R053	
	26	PAR CP62	R053	
	27	PAR CP62	R053	
	28	PAR CP62	R053	
	29	PAR CP62	R053	
	30	PAR CP62	R053	
	31	PAR CP62	R053	
	32	PAR CP62	R053	
	33	2 x PAR CP62	L176	
	34	4 x PAR CP62	L281	
	35	4 x 613	L203 + R132	
	36	PAR CP62	L176	
	37	2 x PAR CP62	L176	
	38			
	39	PC 2kW	L204	
	40	2 x PC 1kW	L203+R132	
	41			
	42			
	43			
	44			
256	45	Machine a fumée		
257	46			
	47			
	48	Public Salle		
	49			
	50			
	100	Service Coulisses		

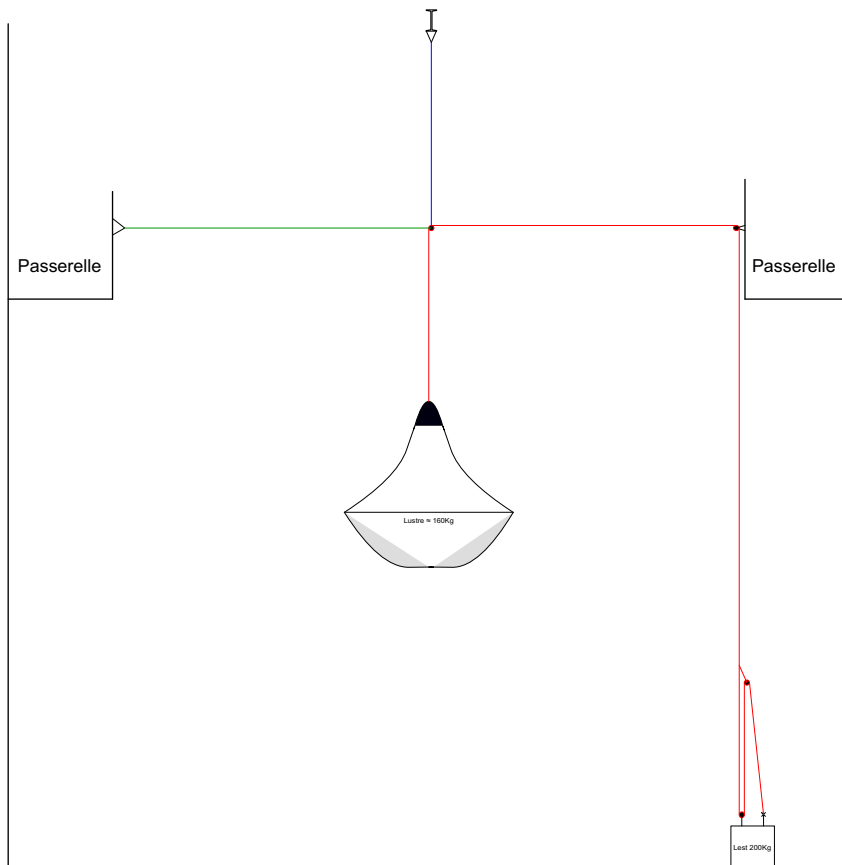


Point d'accroche central à moins de 9/10m

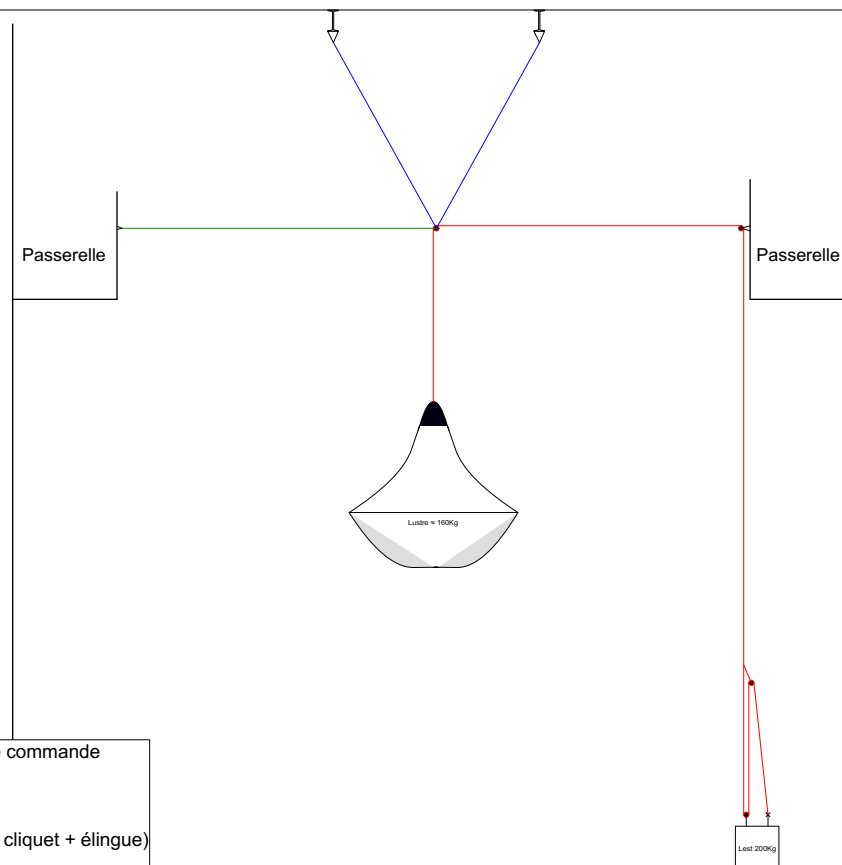


- Drisse de commande
- Élingue
- Hauban (sangle a cliquet + élingue)
- Poulie

Pas d'accroche centrale, points à moins de 9/10m



Point d'accroche central à plus de 9/10m



- Drisse de commande
- Élingue
- Hauban (sangle a cliquet + élingue)
- Poulie

Pas d'accroche centrale, points à plus de 9/10m